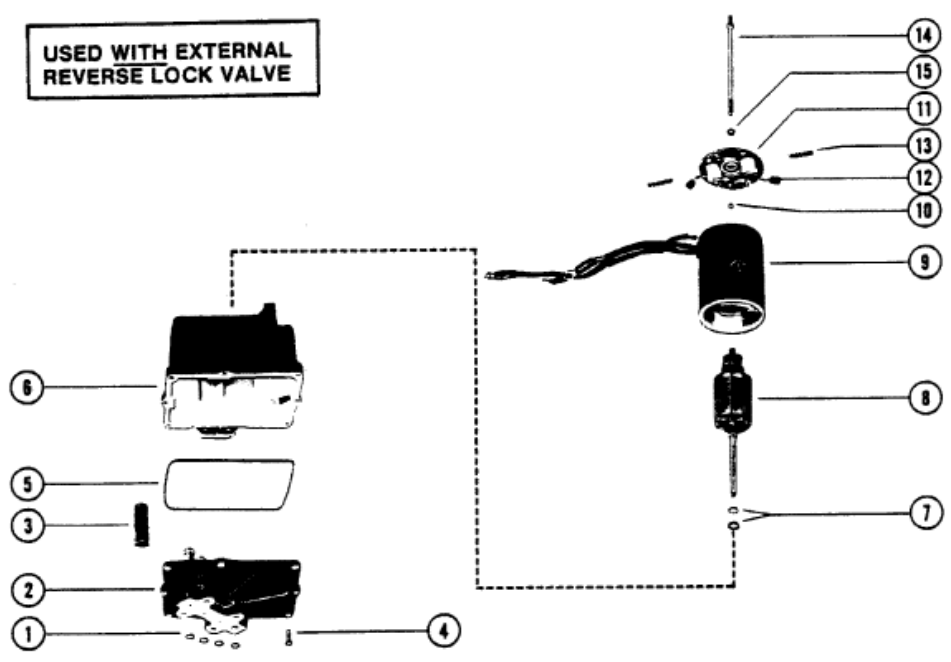


**USED WITH EXTERNAL  
 REVERSE LOCK VALVE**



Parts List						
Ref	Class	Part	Description	Qty	Comment	Footnote
--		79271A 4	HYDRAULIC PUMP ASSEMBLY, C	1		
1	25	48171	"O" RING, HYDRAULIC PUMP	4		
2	392	7734	VALVE BODY AND GEAR ASSE	1		
3	392	2618	CAN, VALVE BODY	1		
4	10	20411	SCREW, VALVE BODY TO RESI	8		
5	392	2937	SEAL, RESERVOIR TO VALVE	1		
6	392	2939	RESERVOIR ASSEMBLY (META	1		
7	392	2623	WASHER, THURST - ARMATUF	AR		22
8	392	2943	ARMATURE, FIELD AND FRAMI	1		
9	392	2942	FIELD AND FRAME ASSEMBLY	1		
10	392	2944	BALL, COMMUTATOR END PLA	1		
11	392	2940	PLATE ASSEMBLY, COMMUTA	1		
12	392	2941	BRUSH SET, COMMUTATOR	1		
13	392	2529	SPRING SET BRUSH TENSION	1		
14	392	2938	BOLT SET, THRU - PLATE AND	1		
15	13	26996	LOCKWASHER, THRU BOLT	2		